

T96M



Product Features

- Adjustable power size EN 3~6
- Adjustable closing & latching speed
- Thermo-constant valve
- Concealed mount
- Cam action
- Track arm
- Single-action door
- Compatible with Fortress electromagnetic hold-open application (EHO)
- T96M can be installed in virtually all doors with minimum thickness of 50mm or more

Power size	3~6
Max. Door width (mm)	1400
Max. Opening Angle	120

Application Ranges

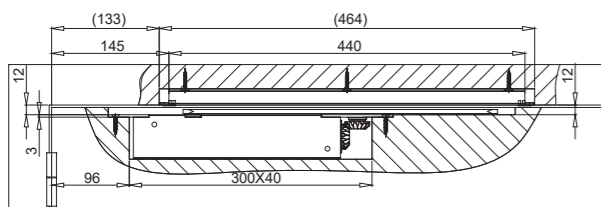
- Concealed in door
- Concealed in transom (Non-EN certified)

Finishes

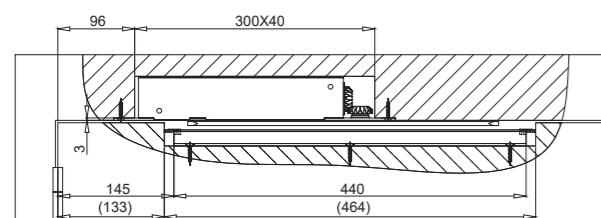
- Anodized aluminum for door closer body and track rail as standard
- Painted – silver, brown, gold, black, white & other RAL colors upon request & discussion

Installation

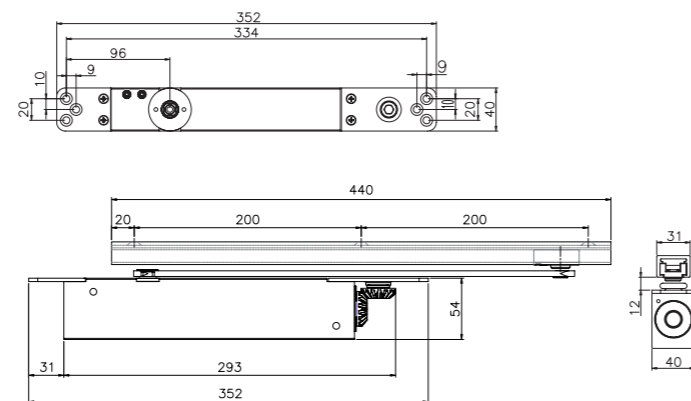
- Concealed in door



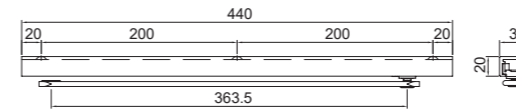
- Concealed in transom



Dimensions

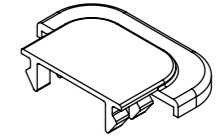


Accessories



ZAR-I150 (large)

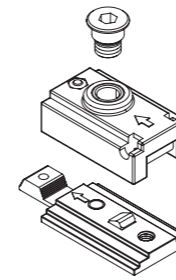
- Track arm & rail
- EN Certified



ZSCR-T136

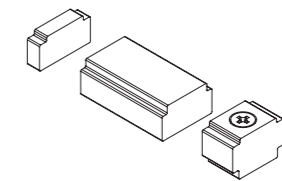
- End cap
- For track arm & rail: ZAR-I150 (large)

Options



ZSCR-T126

- Hold-open device
- For track arm & rail: ZAR-I150 (large)



ZSCR-T111

- Cushion
- For track arm & rail: ZAR-I150 (large)