

# T66B (T660)



## Product Features

- Fixed power size EN 3
- Adjustable closing & latching speed
- Thermo-constant valve
- Concealed mount
- Rack & Pinion
- Track arm
- Hold-open function is reversible
- Built in cushion limit stay
- Single-action door
- Non-handed installation

Power size	3
Max. Door width (mm)	950
Max. Opening Angle	105

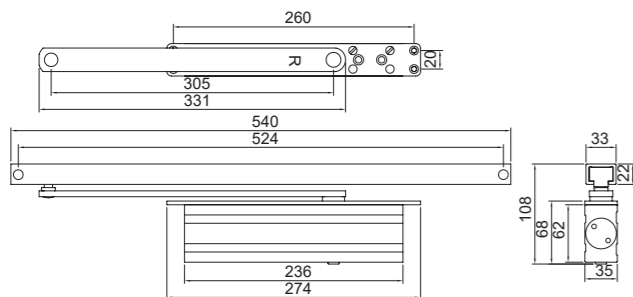
## Application Ranges

- Concealed in door

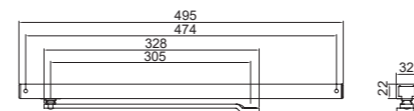
## Finishes

- Anodized aluminum for door closer body as standard
- Painted – silver, brown, gold, black, white & other RAL colors upon request & discussion

## Dimensions

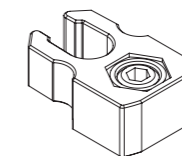


## Accessories



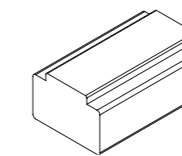
### ZAR-L088

- Track arm & rail
- EN Certified



### ZAB-D078-63

- Hold-open device
- Reversible (HO & Non-HO)
- For track arm & rail: ZAR-L088



### ZAA-L088-68

- Cushion
- For track arm & rail: ZAR-L088