

T65G

Surface Mounted Rack & Pinion Door Closer with Track Arm



Certificate:
2812-CPR-AD5074



Product Features:

- Adjustable power size EN 2~4
- Adjustable closing & latching speed
- Adjustable back check
- Adjustable delay action (optional upon request) ★
- Thermo-constant valve
- Surface mount
- Rack & Pinion
- Track arm
- Single-action door
- Non-handed installation

- **Power size** 2~4
- **Max. door width (mm)** 1100
- **Max. opening angle** 180

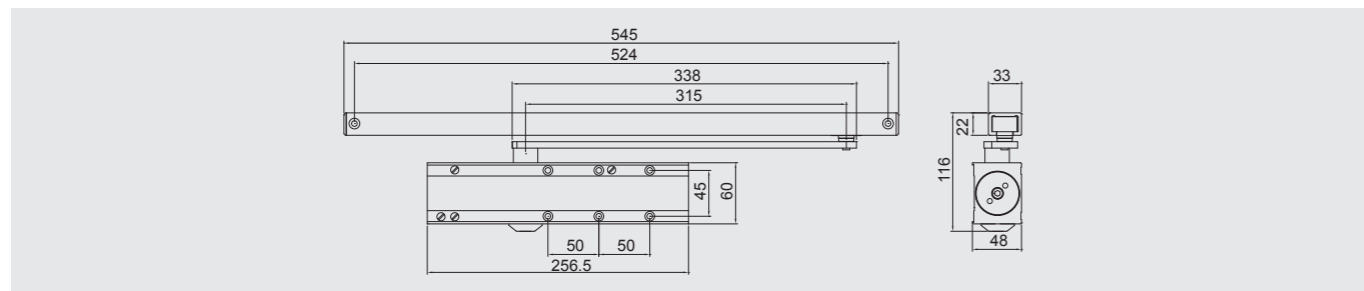
Application Ranges:

- Standard door mount on pull side
- Transom mount on pull and push side

Finishes:

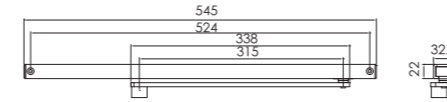
- Anodized aluminum for door closer body as standard
- Painted – silver, brown, gold, black, white & other RAL colors upon request & discussion
- Plating (for cover only) - US finish code colors upon request & discussion

Dimensions:



★ This option is not covered by the Certificate

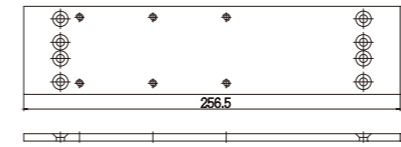
Accessories



ZAR-I149

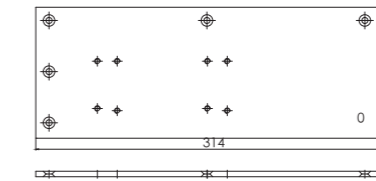
- Track arm & rail
- EN Certified

Options



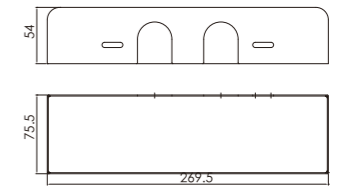
ZMO-C65000

- Mounting plate



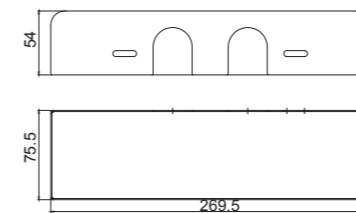
ZMO-C75000

- Drop plate



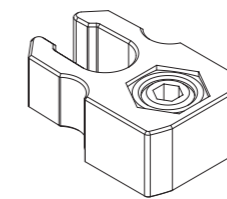
ZCO-C75000

- Metal cover (steel)
- Non-handed



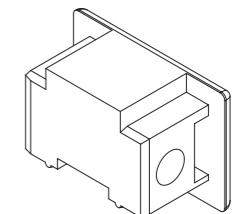
ZCO-C76630

- Metal cover (stainless steel)
- Non-handed



ZAB-D078-63

- Hold-open device
- For track arm & rail: ZAR-I149



ZAA-D078-66

- End cap
- For track arm & rail: ZAR-I149