

T63B



Product Features

- Fixed power size EN 3
- Adjustable closing & latching speed
- Adjustable back check (optional upon request)
- Thermo-constant valve
- Surface mount
- Rack & Pinion
- Track arm
- Single-action door
- Non-handed installation

Power size	3
Max. Door width (mm)	950
Max. Opening Angle	180

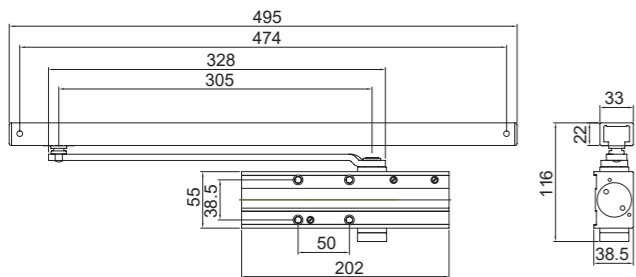
Application Ranges

- Standard door mount on pull side
- Transom mount on pull and push side

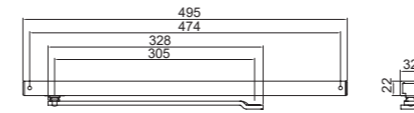
Finishes

- Anodized aluminum for door closer body and track rail as standard
- Painted – silver, brown, gold, black, white & other RAL colors upon request & discussion

Dimensions

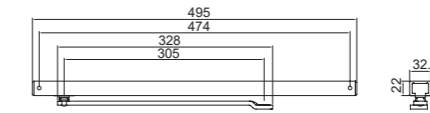


Accessories



ZAR-I136

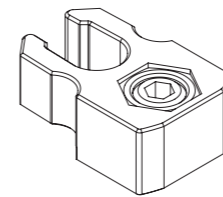
- Track arm & rail
- EN Certified



ZAR-I151

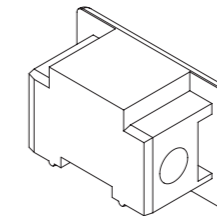
- Track arm & rail
- Heat treating arm for back check
- EN Certified

Options



ZAB-D078-63

- Hold-open device
- For track arm & rail: ZAR-I136 & ZAR-I151



ZAA-D078-66

- End cap
- For track arm & rail: ZAR-I136 & ZAR-I151