

# R500

## Transom closer



**LISTED**



**ADA Compliant**

### Certificate

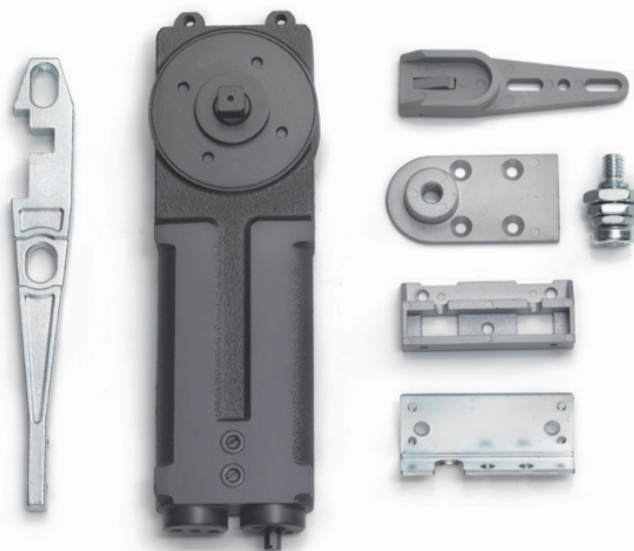
UL: 2-4 (R500)/2-3\* (R50B1)/3-5 (R50C1)/  
1-4\* (R50D1) / 3 (R503)

ADA Compliant: 1-4

\* Size 2-3 could using in Size 1 by adjusting, size 1 is not covered by CAN/ULC S133 since it is not intended for use with swinging doors in fire separations and on exit doors

### Product Features

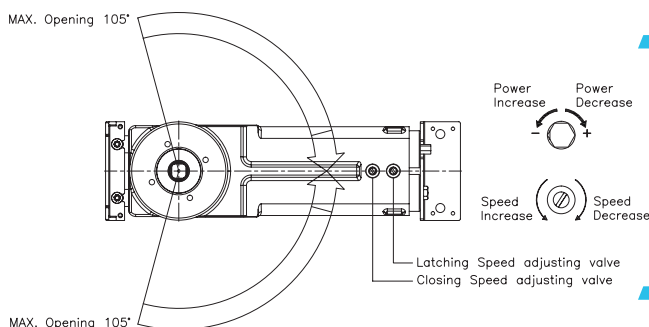
- Adjustable closing & latching speed
- Maximum door opening angle at 90° or 105°
- Mechanical hold-open at 90 ° or 105 ° (optional upon request )
- Concealed transom mount



Power size	1	2	3	4	5
<b>Max. Door width [Inches (mm)]</b>	31 1/2 (800)	35 7/16 (900)	39 3/8(1000)	43 5/16(1100)	49 1/64 (1250)
<b>Max. Door weight [lbs (kg)]</b>	220 (100)				

### CAUTION!

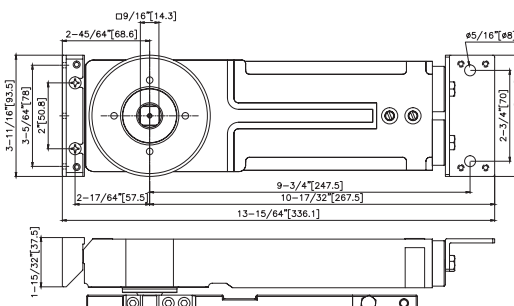
Door closers adjusted to meet ADA requirements, including those certified to BHMA and ANSI Standard A156.4, may not provide sufficient power to close and latch the door.



### Accessories

- Standard arm
- Side load arm
- End load arm
- Heavy duty pivot (max. door weight 330 lbs (150kg))
- Front bracket
- Back bracket
- Pivot

### Dimensions



### Application Ranges

- Suitable for single & double action door
- Available for light , medium & heavy duty door

### Finishes

- Painted – silver black & other colors upon request & discussion