

# C53M

ANSI G1 Standard



## Product Features

- Adjustable power size 3~6
- Adjustable closing & latching speed
- Adjustable backcheck
- Thermo-constant valve
- Surface mount
- Rack & Pinion
- Standard arm
- Single-action door
- Non-handed installation

## Application Ranges

- Standard door mount on pull side
- Top jamb mount on push side
- Parallel arm bracket mount on size 4~6

## Standard & Top Jamb

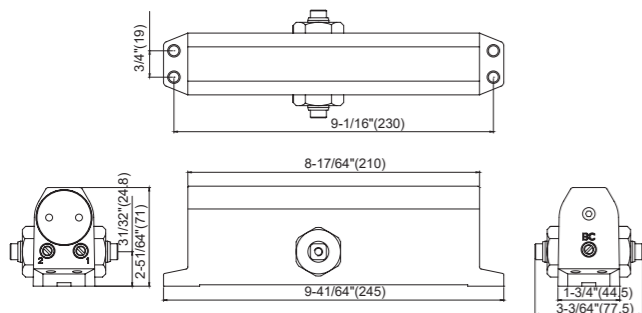
Max. Door Size [Inches (mm)]		30" (762)	36" (914)	42" (1067)	48" (1219)
Door	Interior	Size 1	Size 2	Size 3	Size 4
	Exterior	Size 3	Size 4	Size 5	Size 6

Note: 1. Indicates recommended application of door width for closer size. Determine door width, adjust spring power to match chart.  
 2. For parallel arm application, it requires to adjust more spring power to meet door width.

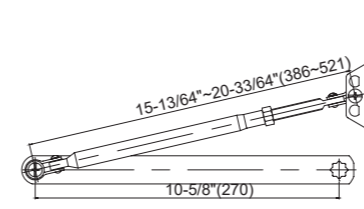
## Finishes

- Painted –silver, brown, gold, black, white & other RAL colors upon request & discussion

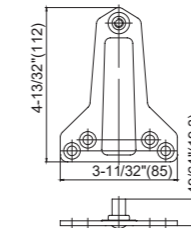
## Dimensions



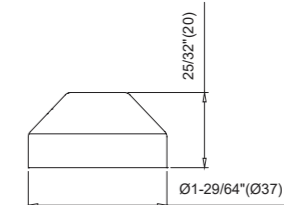
## Accessories



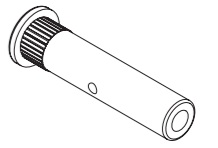
- ZAR-A178**
- Standard arm
  - Non-handed
  - ANSI G1/ UL Certified



- ZPB-K08**
- Parallel bracket
  - ANSI G1/ UL Certified

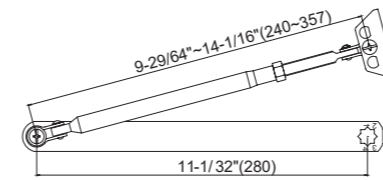


- ZDAC8220-05**
- Pinion cap

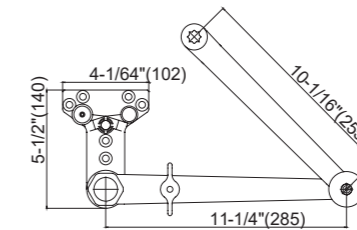


- ZSCR-L102**
- SNB screw pack

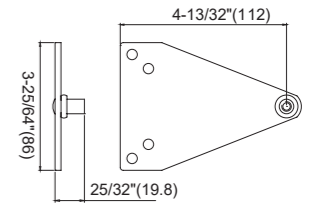
## Options



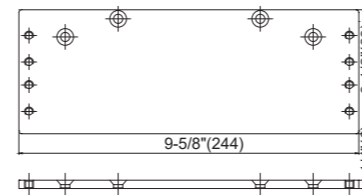
- ZAR-A044 / ZAR-A128**
- Standard arm
  - Non-handed
  - ANSI G1/ UL Certified



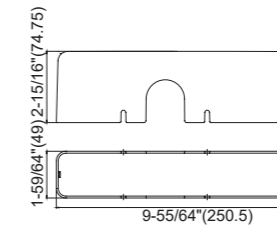
- ZAR-C187**
- Heavy duty hold-open arm
  - Non-handed



- ZPB-K04**
- Parallel bracket
  - ANSI G1/ UL Certified



- ZMO-K25**
- Drop plate –Standard mount/ Parallel arm/ Top jamb



- ZCO-K23**
- Plastic cover
  - Non-handed