

C53F

ANSI G1 Standard

Rack & Pinion Door Closer with Standard Arm



LISTED
ANSI A156.4 G1



ANSI A117.1 ADA Compliant

Product Features:

- Adjustable power size 1~4
- Adjustable closing & latching speed
- Adjustable backcheck
- Thermo-constant valve
- Surface mount
- Rack & Pinion
- Standard arm
- Single-action door
- Non-handed installation

Application Ranges:

- Standard door mount on pull side
- Top jamb mount on push side
- Parallel arm bracket mount on size 2~4

CAUTION!

Door closers adjusted to meet ADA requirements, including those certified to BHMA and ANSI Standard A156.4, may not provide sufficient power to close and latch the door.

Standard & Top Jamb:

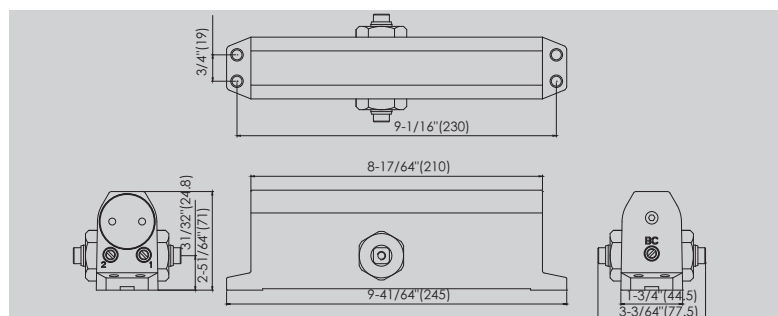
Max. Door Size [Inches (mm)]		30" (762)	36" (914)	42" (1067)	48" (1219)
Door	Interior	Size 1	Size 2	Size 3	Size 4
	Exterior	Size 3	Size 4	Size 5	Size 6

Note: 1. Indicates recommended application of door width for closer size. Determine door width, adjust spring power to match chart.
2. For parallel arm application, it requires to adjust more spring power to meet door width.

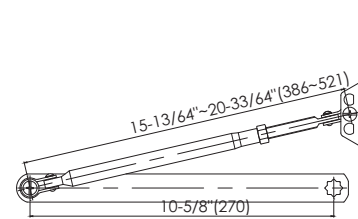
Finishes:

- Painted -silver, brown, gold, black, white & other RAL colors upon request & discussion

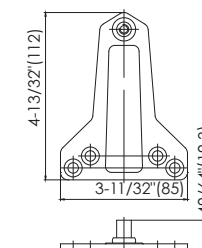
Dimensions:



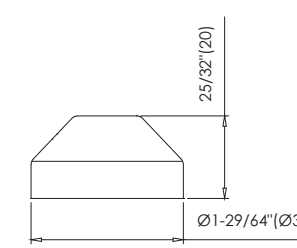
Accessories



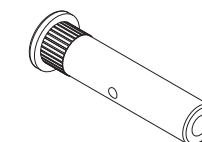
- ZAR-A178**
- Standard arm
 - Non-handed
 - ANSI G1 / UL Certified



- ZPB-K08**
- Parallel bracket
 - ANSI G1 / UL Certified

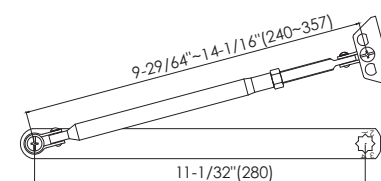


- ZDAC822**
- Pinion cap

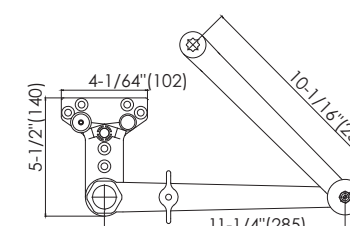


- ZSCR-L102**
- SNB screw pack

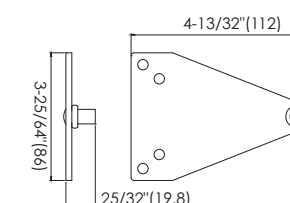
Options



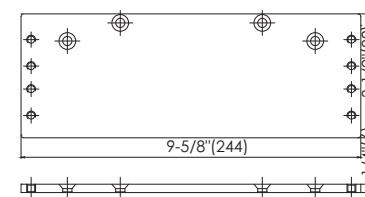
- ZAR-A044 / ZAR-A128**
- Standard arm
 - Non-handed
 - ANSI G1 / UL Certified



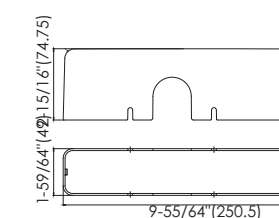
- ZARC-187**
- Heavy duty hold-open arm
 - Non-handed



- ZPB-K04**
- Parallel bracket
 - ANSI G1 / UL Certified



- ZMO-K25000**
- Drop plate -Standard mount/ Parallel arm/ Top jamb



- ZCO-K23**
- Plastic cover
 - Non-handed