

# C71N

ANSI G1 Standard

Rack & Pinion Door Closer with Standard Arm



**LISTED**  
ANSI A156.4 G1



ANSI A117.1 ADA Compliant

## Product Features:

- Adjustable power size 1~6
- Adjustable closing & latching speed
- Adjustable backcheck
- Adjustable delay action (optional upon request)
- Thermo-constant valve
- Surface mount
- Rack & Pinion
- Standard arm
- Single-action door
- Non-handed installation

## Application Ranges:

- Standard door mount on pull side
- Top jamb mount on push side
- Parallel arm bracket mount on size 1~5

### CAUTION!

Door closers adjusted to meet ADA requirements, including those certified to BHMA and ANSI Standard A156.4, may not provide sufficient power to close and latch the door.

## Standard & Top Jamb:

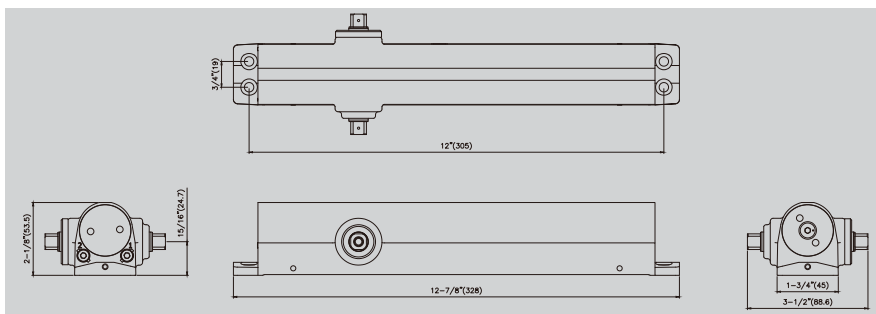
Max. Door Size [Inches (mm)]		30" (762)	36" (914)	42" (1067)	48" (1219)
Door	Interior	Size 1	Size 2	Size 3	Size 4
	Exterior	Size 3	Size 4	Size 5	Size 6

Note: 1. Indicates recommended application of door width for closer size. Determine door width, adjust spring power to match chart.  
2. For parallel arm application, it requires to adjust more spring power to meet door width.

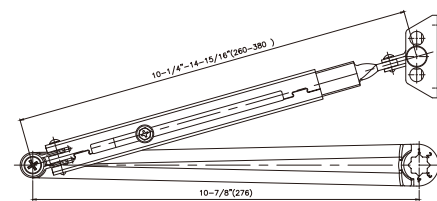
## Finishes:

- Painted –silver, brown, gold, black, white & other RAL colors upon request & discussion

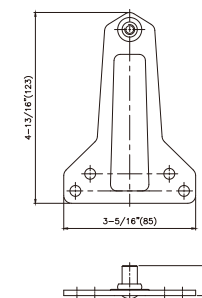
## Dimensions:



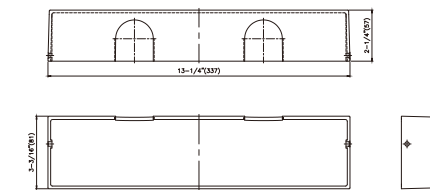
## Accessories



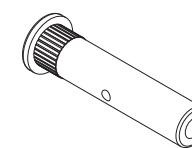
- ZAR-A175**
- Flat arm
  - Non-handed
  - ANSI G1/ UL Certified



- ZPB-K08**
- Parallel bracket
  - ANSI G1/ UL Certified

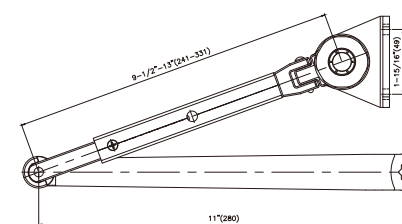


- ZCO-X5300E**
- Plastic cover
  - Non-handed
  - ANSI G1/ UL Certified

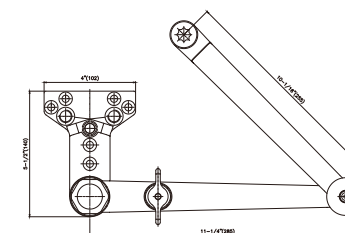


- ZSCR-L102**
- SNB screw pack

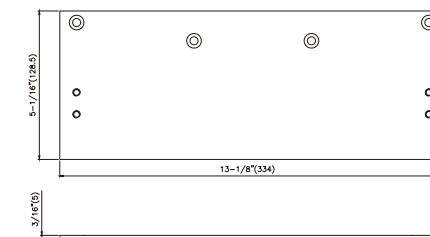
## Options



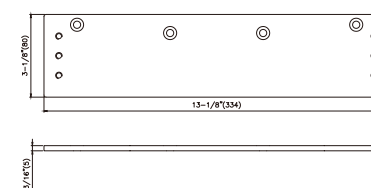
- ZAR-B191**
- Friction type hold-open arm
  - Non-handed



- ZAR-C187**
- Heavy duty hold-open arm
  - Non-handed



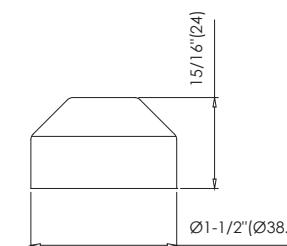
- ZMO-X25000**
- Drop plate – Parallel arm



- ZMO-X35000**
- Drop plate –Standard mount/ Top jamb



- ZCO-X23**
- Slim plastic cover
  - Non-handed
  - ANSI G1/ UL Certified



- ZDAC71N**
- Pinion cap
  - For use with ZCO-X23