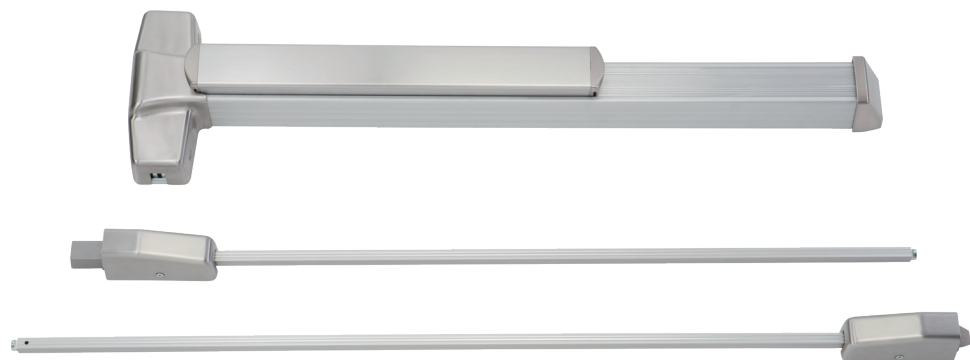


9000 series

Vertical Rod Type



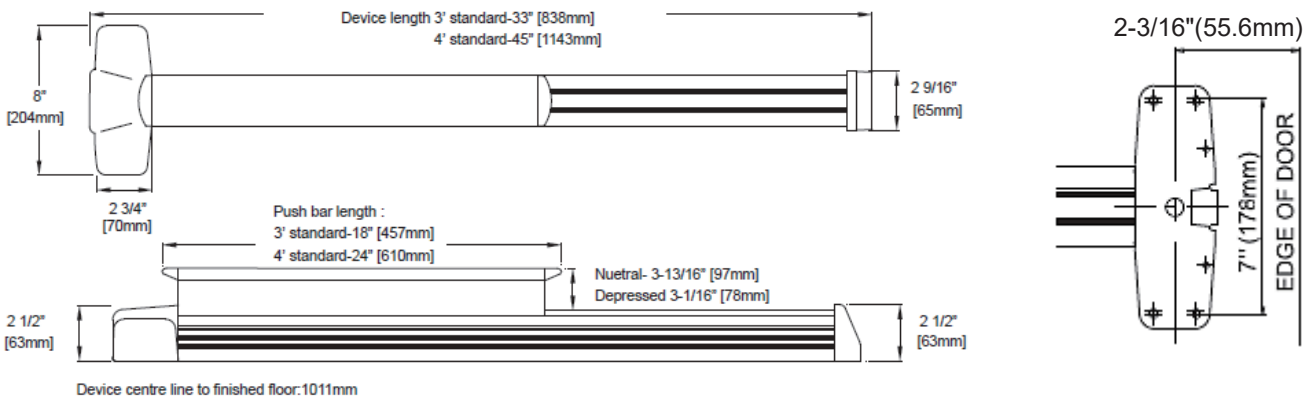
Certifications

- Structure and performance of 9000 series are certified
- ANSI A156.3 – Grade 1
 - UL/cUL listed as panic hardware (9100V/9200V) and 3 hours fire rated exit hardware (F9100V/F9200V)

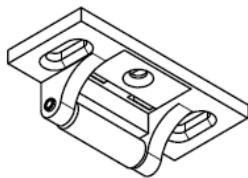
Specifications

Door width	3' standard for door width of 2'4" to 3' (711mm to 914mm) 4' standard for door width of 2'10" to 4' (864mm to 1219mm)
Door thickness	1-3/4" (44mm) and 2-1/4" (57mm) thick of metal or wood door
Fasteners	Furnished standard with sheet metal & machine screws. Sexnuts bolts supplied standard for fire rated exit device.
Latch Bolt	9/16" (15mm) throw, deadlocking design
Strike	For 3/4" (19mm) stop / Fire rated -For 7/8"(22.5mm) stop
Reversible	Non-handed, reversible for all functions and trims
Stile	4-1/4" (108mm) minimum
Cylinders	For trim, lever
Dogging	Hex key dogging on non-fire labeled device (9000R only)
Quiet damper	A fluid damper reduces the greatest noise associated with exit device operations

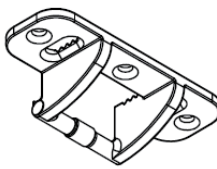
Mounting Position



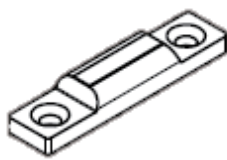
Top Strikes



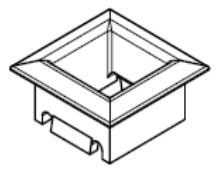
ZEB -RSA04 -E9E102428
used with 9000V



ZEB -VFB0A -E9E201528
used with F9000V (fire rated)

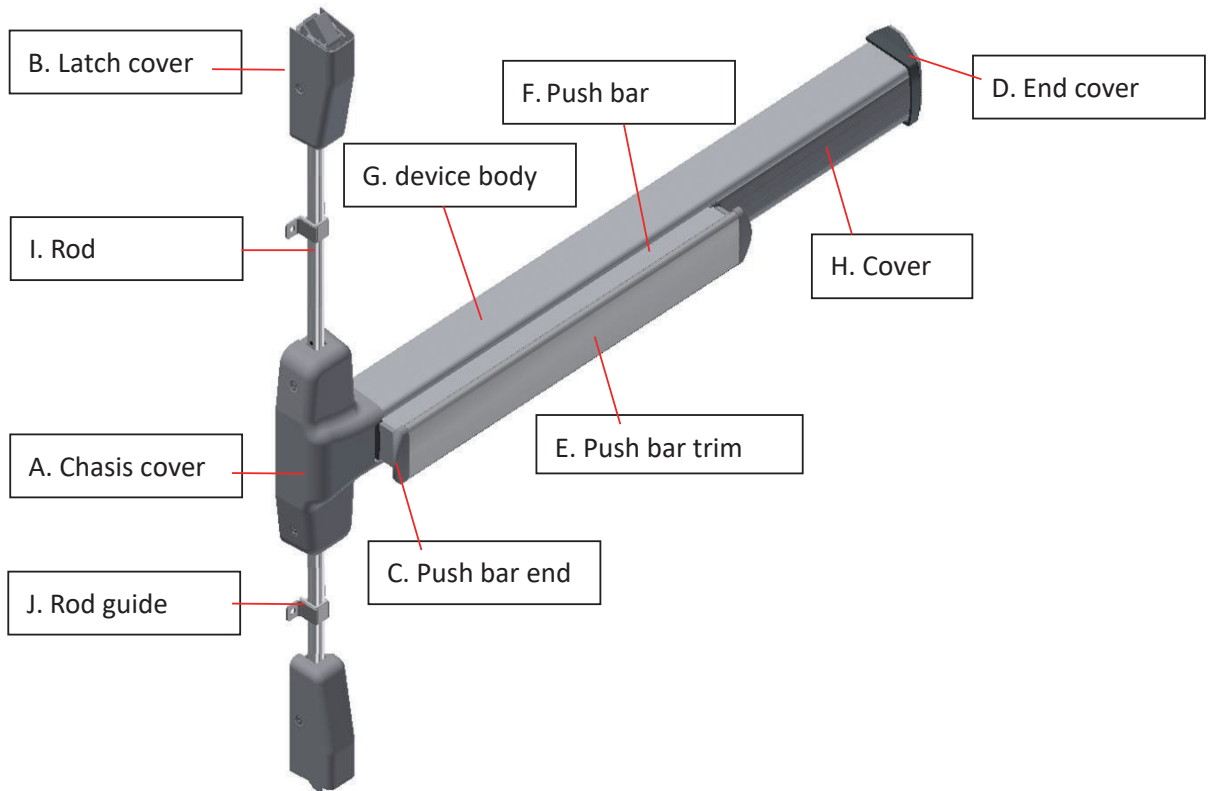


ZEA-VS00E -E9E201635
used with 9000V



ZEB -VFB0A -E9E201528
used with 9000V/F9000V (fire rated)

Standard Finishes



US no.	Description	A / B	C / D	E / J	F / G / H / I
US28	Aluminum anodized	Paint	Paint	Satin stainless steel,630	Anodized
US32D	Satin stainless steel	Satin stainless steel,630	Plated	Satin stainless steel,630	Anodized
313	Dark bronze painted	Paint	Paint	Paint	Paint
US26D	Satin chrome plated	Plated	Plated	Satin stainless steel,630	Anodized

Certified finishes: US32D/US26D (other available finishes upon request & discussion)
Information in this catalog is subject to change without notice